

Installing Jump Ship Engineering Preset

Short Version

- Open your **Artemis** folder.
- Back up engineeringSettings.dat if you have one.
- Copy/replace **engineeringSettings.dat** with this version.

Typical Artemis folder:

C:\Program Files (x86)\Steam\steamapps\common\Artemis\Artemis\

C:\Program Files (x86)\Artemis\

- Write down the engineering jump drive hotkeys in the _key.txt file.

Long Version 1

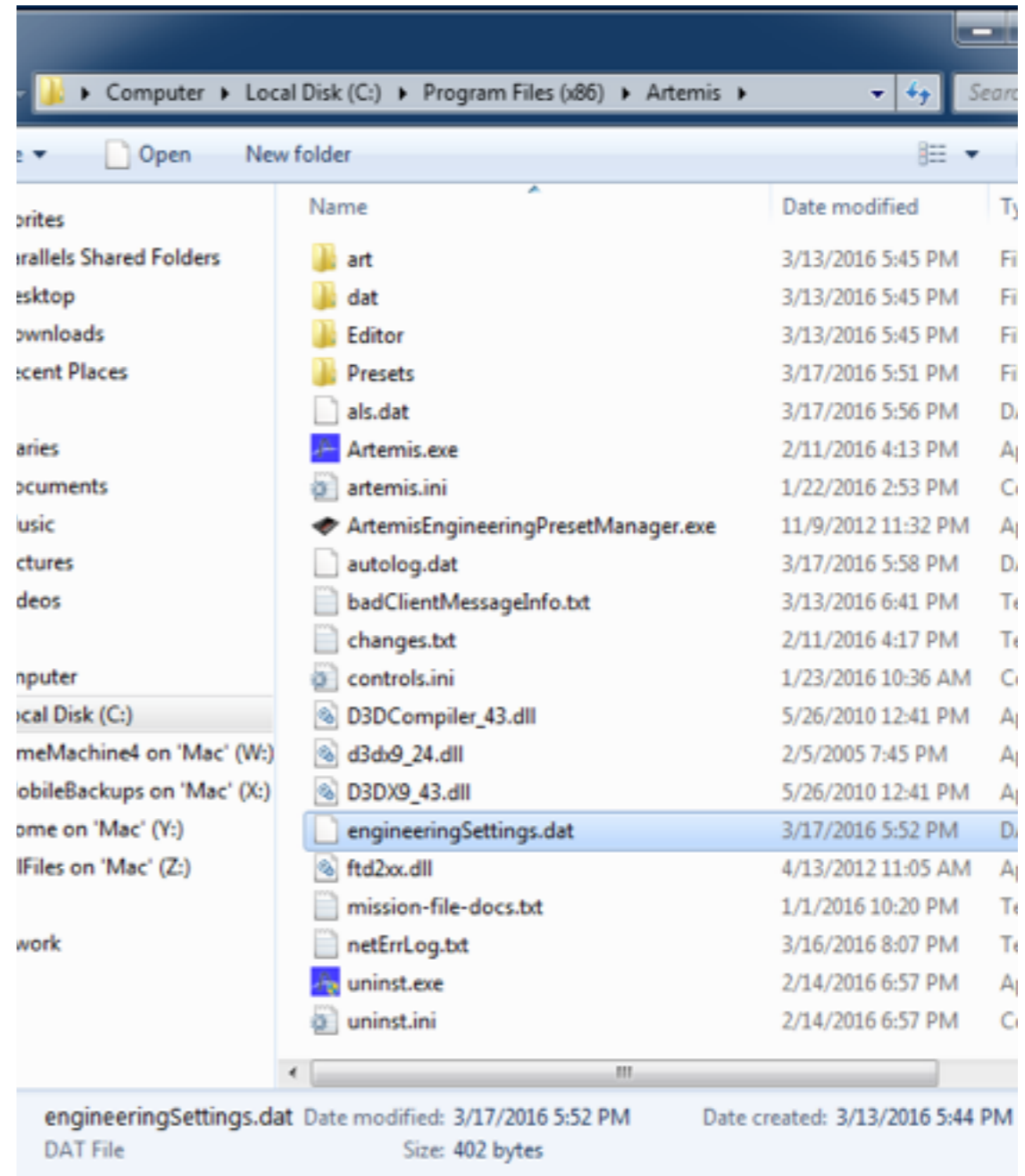
Open your Artemis folder.

If you purchased the game directly, it probably installed here:

C:\Program Files (x86)\Artemis\

If you bought the game through steam, it probably installed here:

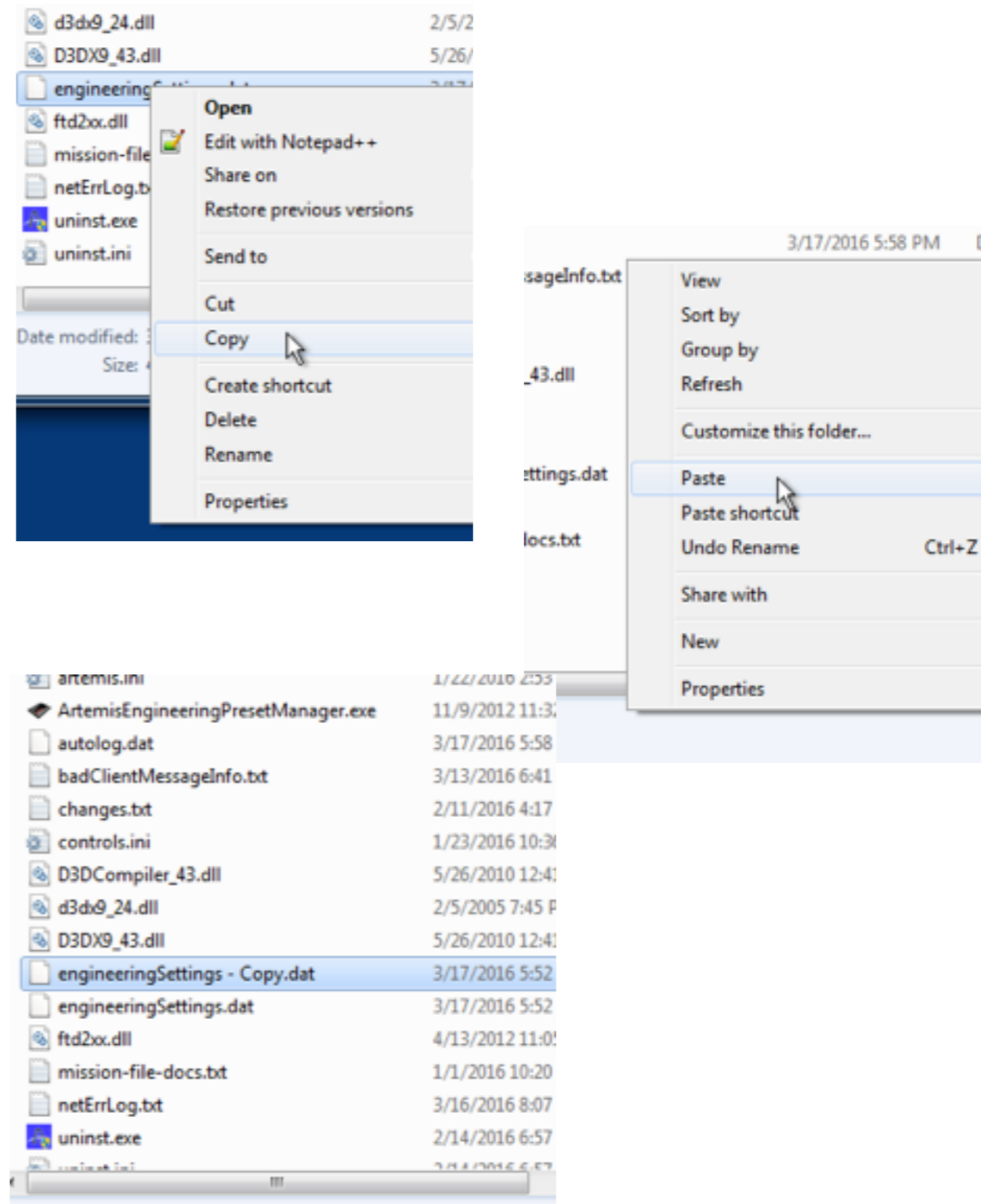
C:\Program Files (x86)\Steam
\steamapps\common\Artemis
\Artemis\



Long Version 2

If you have an engineeringSettings.dat copy it, and paste it.

This creates a backup named engineeringSettings - Copy.dat.

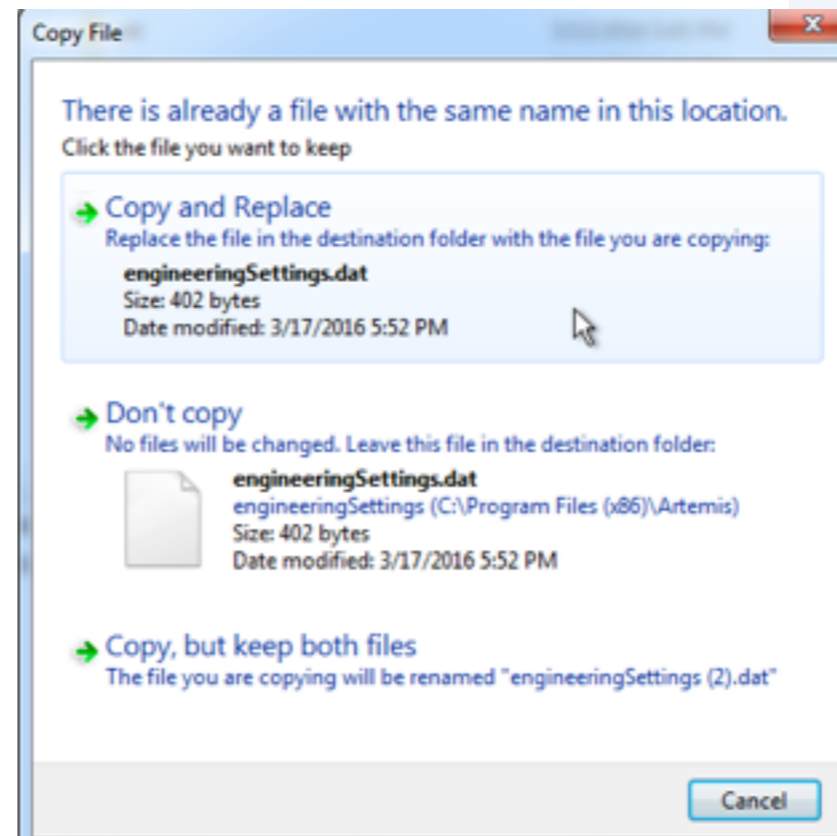
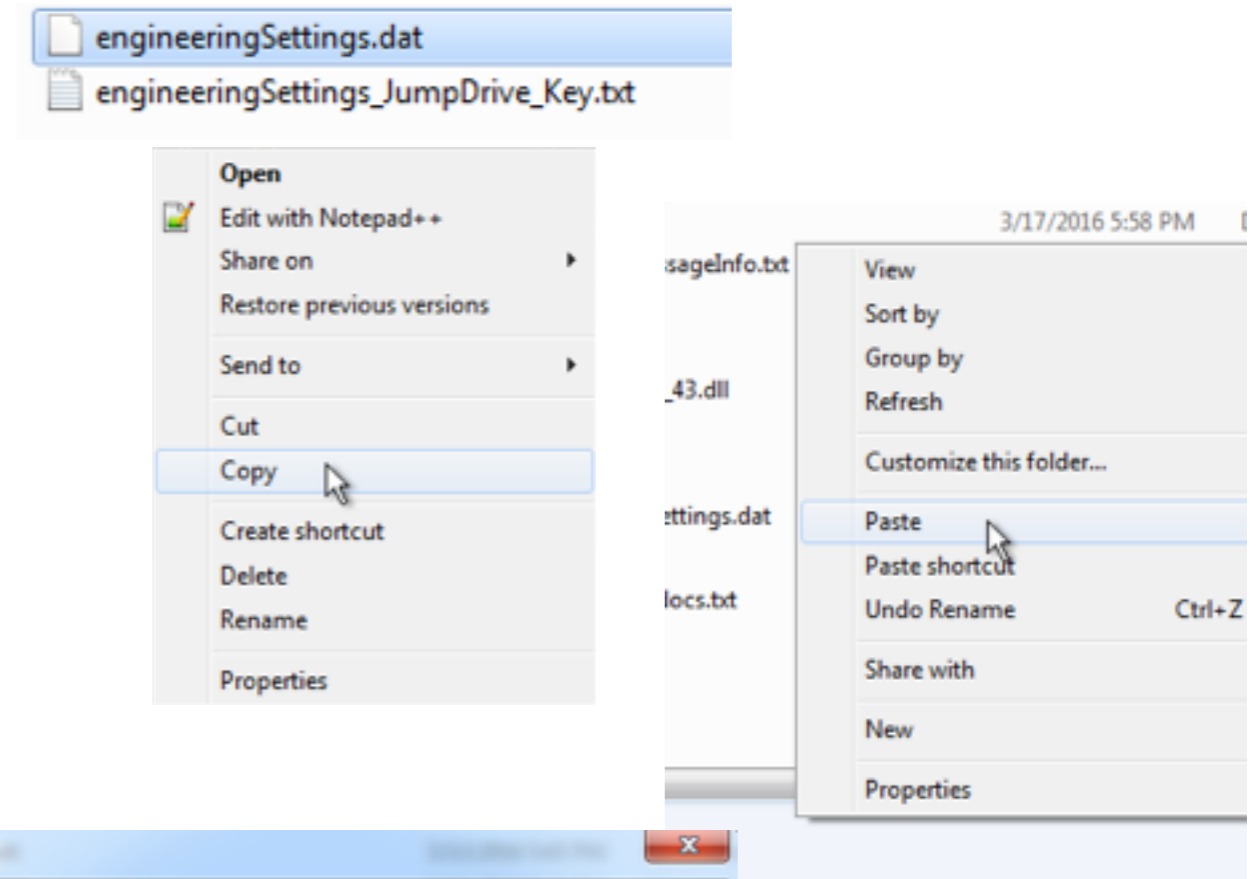


Long Version 3

Open the engineeringSettings_JumpDrive.zip file and copy the engineeringSettings.dat file that is in the zip.

Paste it in your Artemis folder.

Copy and Replace.



Long Version 4

Open
engineeringSettings_JumpDrive_Key.txt

Take notes.

Put them where you can see them.

